

## GSE At-a-Glance



Yakutat Power Plant, Heat Recovery  
& Electric Distribution

### PROJECT TYPES

- Power Generation
- Bulk Fuel
- Electric Distribution
- Heat Recovery
- Hydro | Wind Integration
- Biomass



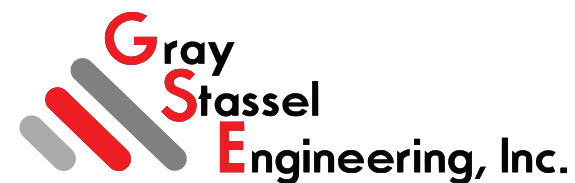
Diomedes Bulk Fuel Tank Farm & Power Plant

## OUR EXPERIENCE

- 65+ Power plants
- 50+ Bulk fuel | upgrades
- 60+ Heat recovery systems
- 30+ Electric distribution upgrades | interties
- 10+ Hydro | Wind integration

## Where We've Worked

Akhiak	Elim	Lime Village	Port Alsworth
Akiachak	Emmonak	Manokotak	Port Heiden
Akiak	Fort Yukon	Marshall	Quinhagak
Alakanuk	Galena	McGrath	Red Devil
Allakaket	Gambell	Mekoryuk	Ruby
Ambler	Glenallen	Mentasta	Russian Mission
Angoon	Golovin	Minto	Savoonga
Anvik	Goodnews Bay	Mountain Village	Selawik
Arctic Village	Grayling	Naknek	Shageluk
Atka	Gustavus	Nanwalek	Shaktolik
Atmautluak	Holy Cross	Napakia	Shishmaref
Beaver	Hoonah	Napaskiak	Shungnak
Bethel	Hughes	Newhalen	Sleetmute
Brevig Mission	Igiugig	Newtok	St. George
Buckland	Iliamna	Nightmute	St. Mary's
Central	Ivanof Bay	Nikolai	St. Michael
Chefornak	Kake	Nikolski	Stebbins
Chevak	Kaltag	Noatak	Stony River
Chignik Bay	Karluk	Nome	Takotna
Chignik Lagoon	Kasigluk	Nondalton	Tatitlek
Chignik Lake	Kiana	Noorvik	Teller
Chitina	King Cove	Northway	Tenakee Springs
Chuathbaluk	Kipnuk	Nunam Iqua	Togiak
Cordova	Kivalina	Nunapitchuk	Tok
Crooked Creek	Kobuk	Old Harbor	Tooksook Bay
Dillingham	Kokhanok	Oscarville	Tuluksak
Diomedes	Koliganek	Ouzinkie	Tunanak
Dot Lake	Kongiganak	Pedro Bay	Tuntutuliak
Eagle	Kotlik	Pelican	Twin Hills
Edna Bay	Koyukuk	Perryville	Unalakleet
Eek	Kwethluk	Pilot Point	Venetie
Egegik	Kwigillingok	Pilot Station	Wales
Ekwo	Larsen Bay	Platinum	White Mountain
Elfin Cove	Levelock	Port Alexander	Yakutat



RELIABLE ENERGY ENGINEERING  
IN RURAL ALASKA.



P.O. Box 111405  
Anchorage, AK 99511-1405  
Main Office 907-349-0100  
[www.gse.engineering](http://www.gse.engineering)

## Who We Are

Gray Stassel Engineering, Inc., (GSE) is an Alaska-owned, Anchorage-based firm incorporated in 1993 (originally as Alaska Energy and Engineering, Inc.) specifically to provide engineering services for rural energy projects. GSE's senior leadership includes Steven J. Stassel, P.E. President; Brian C. Gray, P.E. Vice President; and Clois Versyp, P.E. Senior Electrical Engineer.

## How We Work

As a small firm, GSE commits senior-level registered engineers to the execution of every phase of a project. Our experience has fostered professional relationships throughout Alaska and expertise in rural logistics. GSE excels in surmounting the frequent roadblocks that occur during design and construction of remote projects. We provide practical solutions for permitting, site control, and logistics.

## What We've Done

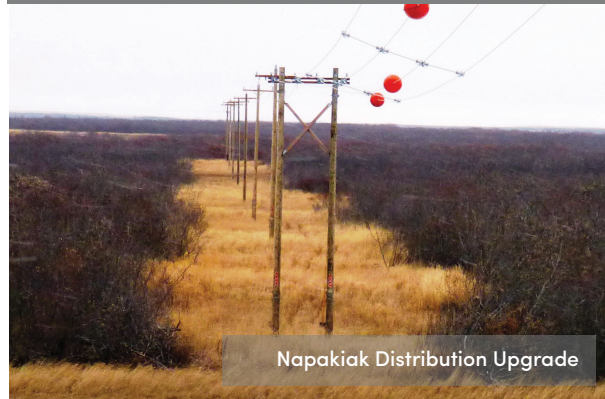
Our experience includes design and construction of projects in more than 120 rural Alaskan communities. We assist owners to employ local force account labor crews for cost-effective construction with local economic benefits. We design functional facilities that meet codes and regulations, provide long-term dependability and are easy to operate and maintain.

## Project Highlights



Ruby Power Plant & Heat Recovery

GSE provided mechanical and electrical design and construction administration. The power plant was designed to safely and reliably integrate with a solar PV system. Construction was completed with local force-account labor crews. The plant's SCADA system enables local operators to draw on remote expertise.



Napakiak Distribution Upgrade

GSE designed, permitted and provided construction administration for a new distribution system as well as an 8-mile overhead tie-line between Bethel and Napakiak. The tie-line used h-pile supported poles and employed winter construction to mitigate wetland damage.



Hoonah Power Project

GSE designed, permitted and provided site control and construction administration for the power plant, heat recovery and bulk fuel tank farm projects. The power plant design integrates hydroelectric generation. The heat recovery project provides heat to six community buildings via a district heat system.

## Our Services

- Concept design
- Cost estimating
- Code compliance surveys
- Permitting and site control
- Detailed engineering design
- Construction administration
- Procurement and logistics support
- Grant management and funding compliance
- Regulatory compliance and spill plans
- Operations & Maintenance manuals
- Quality control services and peer review